

Demand more than good enough

Demand more than good enough means working with a variable frequency drives manufacturer that joins you in the trenches to get the job done right.

Demand Eaton variable frequency drives.

Eaton.com/drives

Variable frequency drives (VFDs)



Micro drives Eaton.com/drives

Compact space-saving drives with programmable features provide valuable energy savings for OEM applications.

- PowerXL™ DE1 variable speed starters
- PowerXL DM1 compact micro drives
- PowerXL DM1 Pro advanced machinery drives
- PowerXL DC1 micro drive with NEMA® 4X option
- PowerXL DA1 micro drives for closed-loop applications



General purpose drives Eaton.com/drives

Engineered for today's demanding commercial and industrial applications, these robust drives provide reliable, efficient and precise motor control.

- PowerXL DG1 general purpose drives
- SVX general purpose drives



HVAC drives Eaton.com/drives

Designed to significantly reduce energy consumption, these ultra-efficient drives increase cost savings for most HVAC applications.

- PowerXL DH1 HVAC drives

Enclosed drives



High-performance drives Eaton.com/dx1

Ideal for applications that require precise speed, torque or closed-loop control. An innovative touchscreen features built-in metering and graphical trending.

- PowerXL DX1 high-performance drives
- SPX high-performance drives
- LCX liquid-cooled drives



Standard enclosed drives Eaton.com/drives

Innovative drives offer pilot devices, circuit breaker/fused disconnects, input/output filtering and bypass capabilities.

- PowerXL DG1 enclosed drives
- PowerXL DH1 enclosed drives
- Explosion-proof drives
- NEMA 1, 12, 3R, 4/4X, 7 enclosures



Advanced VFD solutions Eaton.com/drives

Engineered-to-order configurations with motor protection relays, custom bypass, custom enclosures and harmonics mitigation.

- Filtered and 18-pulse clean power drives
- Active front end drives
- Redundant drives

NEMA motor control, motor protection and enclosed control



NEMA power control Eaton.com/Freedom

Freedom NEMA-rated contactors and starters with solid-state and bi-metallic overload options; universal retrofit kits; UL® listed.

- CN15 contactors
- AN19 starters with solid-state overload
- AN16 starters with bi-metallic overload



Specialty power control Eaton.com/LightingContactors Eaton.com/DP

Designed to deliver application versatility, simple configuration and high-performance operation.

- C25 definite purpose contactors (A2L certified LZGH2/H8) and starters
- CN35/C30CN/A202 lighting contactors
- Vacuum contactors and starters
- B230/B330/MS series manual motor starters



Soft starters Eaton.com/softstarters

Control acceleration and deceleration of three-phase motors with current ranges from 0.8 A to 1000 A. Compact, multifunctional, easy to install and program.

- S801+, S811+ heavy-duty soft starters
- S711 general duty soft starters
- S611 general duty soft starters
- DS7 soft start controllers



Motor protection Eaton.com/C445 Eaton.com/C440

Providing the highest level of motor protection and versatility while maximizing uptime.

- Power Xpert® C445 motor management relays with zero sequence GF and user logic
- C440/XTOE electronic overload relays



Enclosed control Eaton.com/contactors

Expansive, flexible offering with a variety of modifications to meet your enclosed control needs.

- XT compact combination starters
- NEMA and IEC contactors and starters
- Lighting contactors
- Reduced-voltage soft starters
- Pump panels and HVAC starters
- Custom OEM control panels



Aftermarket and renewal parts

Extend the life of existing products with quality replacement parts.

- Replacement contact kits and coils
- Legacy contactor and starter support
- Replacement mill control products



IEC motor control



XT contactors and starters Eaton.com/xt

Compact, space-saving and easy-to-install XT line of IEC contactors and starters is the efficient and effective solution for customer applications from 7 A to 2450 A.

- Non-reversing and reversing contactors and starters
- Bi-metallic and electronic overload relays
- Safety contactors



XT manual motor protectors and combination motor controllers Eaton.com/xt

XT IEC open non-reversing and reversing manual motor controllers combine a manual motor protector with an IEC contactor(s) to provide a complete motor protection solution.

- Bi-metallic manual motor protectors
- Electronic manual motor protectors
- Type E combination motor controllers
- Type F combination motor controllers



Electronic motor starters (EMS) Eaton.com/IECEMS

Full starter with built-in solid-state contacts and integral overload protection. Compact size and high electrical life make it an ideal replacement for traditional contactor/overload relay starter configuration.

- Non-reversing starters
- Reversing starters
- Non-reversing and reversing with e-stop

Automation and safety



Programmable logic controllers Eaton.com/PLC

Ideal for lighting, energy management, industrial control, irrigation, pump control and HVAC.

- easyE4 nano PLCs with AWS cloud connectivity
 - Base device with or without display, 12 I/O
 - Expansion modules with digital/analog and PT100/1000
- XC104, XC204 micro PLCs
- XC300 small



Operator interface Eaton.com/HMI

Features familiar, easy-to-understand control interfaces and command methods that are used in consumer electronics.

- XV100 basic with Linux
- XV300 advanced with Linux
- XP500 panel PCs
- XH300 web panels



Safety products Eaton.com/safety-relays

Created to enhance machine operator safety and machine motor control.

- Programmable and discrete safety relays (ESR5)
- Safety contactors (XT) and safety pushbuttons
- LS-Titan, RS-Titan interlock and limit switches

Sensors



Photoelectric sensors Eaton.com/sensors

Products feature powerful optics and long detection ranges and are built in robust enclosures for any industrial sensing application.

- Tubular and rectangular enclosures
- Optical variants including background rejection
- AC/DC and DC including 2-wire versions



Proximity sensors Eaton.com/sensors

Long detection ranges, high noise immunity, and shock and vibration resistance characterize Eaton's cost-effective proximity sensor line.

- Tubular and rectangular enclosures
- Extended detection ranges up to 100 mm
- AC/DC and DC including 2-wire versions



Limit switches Eaton.com/sensors

A full range of NEMA and IEC mechanical limit switches designed and built to survive in the most difficult application conditions.

- NEMA styles including fully sealed switches
- IEC range includes metal and plastic options
- Interlock switches with safety ratings

Pilot devices and panel components



Pilot devices Eaton.com/pushbuttons

Available in many shapes and sizes, these versatile pilot devices are ideal for applications in the North American (NEMA) and global (IEC) markets.

- 20 mm and 30 mm pushbuttons
- Indicating lights and emergency stops
- Selector and palm switches
- Joysticks and potentiometers



Control stations Eaton.com/pushbuttons

General purpose and heavy-duty options with fixed element or modular design to suit virtually any industrial or commercial application.

- 22.5 mm devices
- 30.5 mm devices



Signal towers Eaton.com/SL

Provide highly versatile, completely modular signaling for key processes—and with IP66 protection, these signal towers thrive indoors and out.

- SL7—70 mm
- SL4—40 mm
- SLC—compact stack lights



Terminal blocks Eaton.com/xb

Built for years of use under demanding conditions, these terminal blocks are available in three simple and reliable terminal connection styles with universal accessories.

- Screw terminals
- Spring cage terminals
- Insulation displacement connection (IDC)



Control power Eaton.com/powersupplies

Wide selection of durable and reliable DIN rail power supplies, available in 12 and 24 Vdc, for general, compact and low-profile applications.

- PSG general purpose power supplies
- PSC compact power supplies
- PSL low-profile power supplies



Industrial relays Eaton.com/relays

Extensive relay line that can be customized to meet many application requirements.

- General purpose relays
- Solid-state relays
- Control, timing and monitoring relays
- Machine tool and terminal block relays

Additional circuit protection solutions from Eaton



Power Defense™ circuit breakers Eaton.com/powerdefense

Eaton's globally rated Power Defense circuit breakers increase personnel safety and provide a foundation for IoT, with embedded communications and metering functionality, helping to optimize your facility's performance.

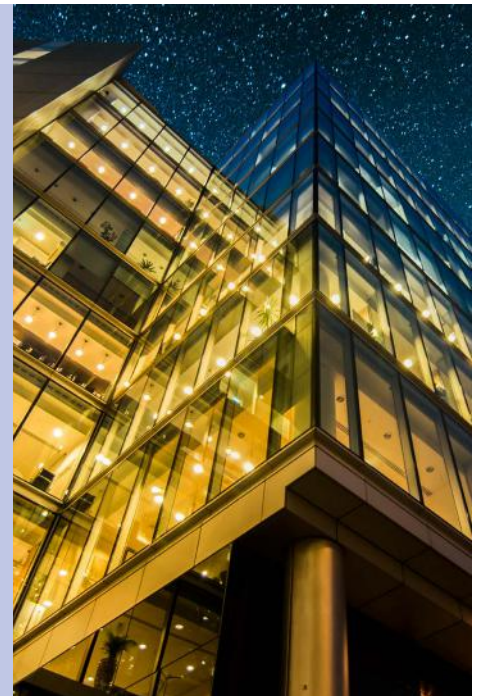
For more information or for technical assistance, contact EatonCare at 877-ETN-CARE.



Bussmann® series fuses, blocks, holders and disconnect switches Eaton.com/bussmannseries

Eaton develops and manufactures Bussmann series fusible circuit protection, power management and electrical safety products for industrial, commercial and alternative energy markets.

For more Bussmann series product information, or for technical assistance, call 855-287-7626.



877-ETN-CARE Distribution and control solutions

877-386-2273

Component order and component returns
(Order Center, EDI, Fax)



Press
1

Project order support
(Bid Manager)



Press
3

Additional EatonCare support centers



Press
5

Technical Resource Center



Press
2

EatonCare Critical Power and Digital Infrastructure (CPDI) including UPS



Press
4

Press
1

Industrial control products

Press
4

Power distribution products

Press
7

Low-voltage variable frequency drives

Press
2

Circuit protection products

Press
5

Power management products

Press
8

Medium-voltage control and drives

Press
3

Residential products

Press
6

Automation products

Press
9

Brightlayer technical support

See document SA02800001E.

Eaton
1000 Eaton Boulevard
Cleveland, OH 44122
United States
Eaton.com

Industrial Control Headquarters
W126 N7250 Flint Drive
Menomonee Falls, WI 53051
United States

©2025 Eaton
All Rights Reserved
Printed in USA
Publication No. SA083077EN / Z29789
January 2025

For more information, visit
Eaton.com/industrialcontrol

EATON
Powering Business Worldwide

Eaton is a registered trademark.
All other trademarks are property of their respective owners.

Follow us on social media to get the latest product and support information.

