

Figure similar

MLFB-Ordering data 1FG1104-1QF33-2FQ1-Z
D01+K06

Client order no. :

Order no. :

Offer no. :

Remarks :

Item no. :

Consignment no. :

Project :

Gearbox data

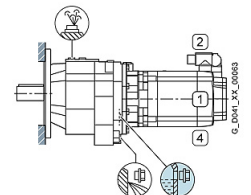
| | | | |
|---|----------------|---|-------------------------|
| Gear box type | Z49 | Radial force maximum | 4360 N |
| Gearbox basic type | Helical geared | Max. permissible radial force with Mmax | 4280 N |
| Gearbox size | 49 | Moment of inertia | 0.87 kgcm ² |
| Transmission stages | 2 | Torsional stiffness | 14 Nm/° |
| Transmission (ratio) | 18.48 | Efficiency | 0.95 |
| Gear number relation | 2365/128 | Mounting position | M1 |
| Output moment maximum (short-time) | 340 Nm | Mounting type | Flange version (A type) |
| max. input speed (briefly) | 4500 rpm | Output shaft version | Solid shaft standard |
| Output speed short-time | 244 rpm | Output shaft dimension | V30x60 mm |
| Emergency off output moment (1000 cycles) | 540 Nm | Gearbox flange diameter | 140 mm |
| | | Output shaft bearing | No |
| | | Figure 2 torque support | - |

General tech. specifications

| | |
|---|--|
| Degree of protection | IP65 |
| Color of the housing | Standard painting (Anthracite RAL 7016) |
| Specification | CE / UL / CSA / EAC / cRUus |
| Net weight | 31.78 kg |
| 1m-sound pressure level L _{pA} (ToI.+3dB(A)) | 75 |
| Plug position | top (default) (2) |
| Connector size | 1 |

Lubrication and sealing

| | |
|----------------------|---------------------------|
| Gear oil | Mineral oil CLP ISO VG220 |
| Output shaft sealing | Standard |
| Oil charge | 0.55 l |



MLFB-Ordering data 1FG1104-1QF33-2FQ1-Z
D01+K06

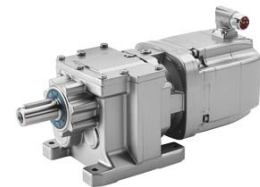


Figure similar

| Motor data | | Limiting data | |
|------------------------|---|---------------------------------|----------|
| Motor type | Permanent-magnet synchronous motor | Maximum speed (short-time) | 5600 rpm |
| Motor type | Compact | Maximum torque | 50.00 Nm |
| DC-link voltage, max. | 510...720V | Motor current short term | 37.0 A |
| Shaft height | 80 mm | Optimum operating point | |
| Cooling | Natural cooling | Optimum speed | 3000 rpm |
| Rated speed | 3000 rpm | Optimum power | 2.95 kW |
| Rated torque (100K) | 9.40 Nm | Recommended Motor Module | |
| Rated power | 2.95 kW | Rated inverter current | 9.0 A |
| Rated current (100K) | 6.50 A | Maximum inverter current | 27.0 A |
| Static torque | 15.50 Nm | Maximum torque | 40.0 Nm |
| Static current | 9.90 A | | |
| Moment of inertia | 26.00 kgcm ² | | |
| Efficiency η | 93 % | | |
| Temperature monitoring | Pt1000 temperature sensor | | |
| Encoder system | Encoder AS20DQI: absolute encoder single-turn 20 bits | | |

Info servo geared motor

Outside the standard temperature range of -10 to +40 °C, further selectable options must be observed, in addition to the lubricant selection.

Further, you have to check the suitability of the components and options used for the requested temperature range.

MLFB-Ordering data 1FG1104-1QF33-2FQ1-Z
D01+K06

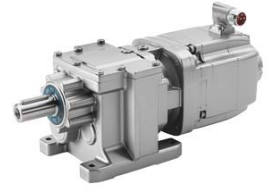


Figure similar

Options

| | |
|-----|---|
| D01 | M1 for helical and parallel shaft gearboxes |
| K06 | Mineral oil CLP ISO VG220 |

Standards

Compliance with standards CE / UL / CSA / EAC / cRUus

CE marking EN 60034