

MLFB-Ordering data 1FG1602-5TD23-2HU1-Z  
D11+G24+K08+N23+Q91



Figure similar

Client order no. :

Order no. :

Offer no. :

Remarks :

Item no. :

Consignment no. :

Project :

### Gearbox data

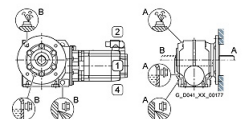
<b>Gear box type</b>	C39	<b>Radial force maximum</b>	6160 N
<b>Gearbox basic type</b>	Helical worm gearbox	<b>Max. permissible radial force with Mmax</b>	5970 N
<b>Gearbox size</b>	39	<b>Moment of inertia</b>	0.06 kgcm <sup>2</sup>
<b>Transmission (ratio)</b>	49.87	<b>Torsional stiffness</b>	-/-
<b>Gear number relation</b>	748/15	<b>Efficiency</b>	0.89
<b>Output moment maximum (short-time)</b>	250 Nm	<b>Mounting position</b>	M1-A
<b>max. input speed (briefly)</b>	4500 rpm	<b>Mounting type</b>	Housing flange (C type)
<b>Output speed short-time</b>	90 rpm	<b>Output shaft version</b>	Hollow shaft standard
<b>Emergency off output moment (1000 cycles)</b>	250 Nm	<b>Output shaft dimension</b>	H25 mm
		<b>Gearbox flange diameter</b>	-/-
		<b>Output shaft bearing</b>	No
		<b>Figure 2 torque support</b>	-

### General tech. specifications

<b>Degree of protection</b>	IP65
<b>Color of the housing</b>	Standard painting (Anthracite RAL 7016)
<b>Specification</b>	CE / UL / CSA / EAC / cRUus
<b>Net weight</b>	15.43 kg
<b>1m-sound pressure level L<sub>pA</sub> (ToI.+3dB(A))</b>	65
<b>Plug position</b>	right (1)
<b>Connector size</b>	1

### Lubrication and sealing

<b>Gear oil</b>	Polyglycol oil CLP ISO PG VG460
<b>Output shaft sealing</b>	Seal increased environmental load
<b>Oil charge</b>	0.30 l



MLFB-Ordering data 1FG1602-5TD23-2HU1-Z  
D11+G24+K08+N23+Q91

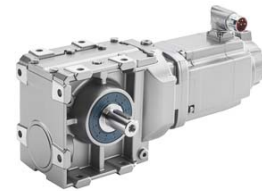


Figure similar

Motor data		Limiting data	
Motor type	Permanent-magnet synchronous motor	Maximum speed (short-time)	6400 rpm
Motor type	Compact	Maximum torque	10.50 Nm
DC-link voltage, max.	510...720V	Motor current short term	7.6 A
Shaft height	48 mm	<b>Optimum operating point</b>	
Cooling	Natural cooling	Optimum speed	3000 rpm
Rated speed	3000 rpm	Optimum power	0.74 kW
Rated torque (100K)	2.35 Nm	<b>Recommended Motor Module</b>	
Rated power	0.74 kW	Rated inverter current	3.0 A
Rated current (100K)	1.85 A	Maximum inverter current	9.0 A
Static torque	2.85 Nm	Maximum torque	10.5 Nm
Static current	2.10 A	<b>Holding brake</b>	
Moment of inertia	3.20 kgcm <sup>2</sup>	Holding brake	with holding brake
Efficiency $\eta$	89 %	Holding brake version	Permanent-magnet brake
Temperature monitoring	Pt1000 temperature sensor	Power supply voltage	DC 24 V $\pm$ 10 %
Encoder system	Resolver 2-pole	Braking torque $M_{1Br} / M_{2Br}$	3.00 Nm
		Holding torque $M_{4Br}$	4.00 Nm
		Opening time	70.0 ms
		Closing time	30.0 ms
		Maximum switching energy per braking action	150.0 J

### Info servo geared motor

Outside the standard temperature range of -10 to +40 °C, further selectable options must be observed, in addition to the lubricant selection.

Further, you have to check the suitability of the components and options used for the requested temperature range.

MLFB-Ordering data 1FG1602-5TD23-2HU1-Z  
D11+G24+K08+N23+Q91



Figure similar

### Options

D11	M1-A for bevel and worm gearboxes
G24	Seal increased environmental load
K08	Polyglycol oil CLP ISO PG VG460
N23	Standard holding brake (permanent magnet brake)
Q91	Plug position right

### Standards

**Compliance with standards** CE / UL / CSA / EAC / cRUus

**CE marking** EN 60034