

## Data sheet for SIMOTICS S-1FK2

Article No. : 1FK2210-3AC01-1SA0

Client order no. :  
Order no. :  
Offer no. :  
Remarks :

Item no. :  
Consignment no. :  
Project :

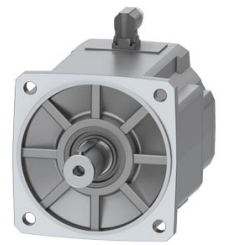


Figure similar

### Basic motor data

Motor type	Permanent-magnet synchronous motor, Natural cooling, IP65
Motor type	Compact
Static torque	30.00 Nm
Static current	15.0 A
Maximum torque	90.00 Nm
Maximum current	55.0 A
Maximum speed	4,400 rpm
Rotor moment of inertia	88.8000 kgcm <sup>2</sup>
Weight	22.0 kg

### Rated data

SINAMICS S210, 3AC 400V

Rated speed	2,000 rpm
Rated torque	26.00 Nm
Rated current	13.5 A
Rated power	5.50 kW

### Encoder system

Encoder system	Encoder AS22DQC: Absolute encoder single turn 22 bit
----------------	------------------------------------------------------

### Motor connection

Connection type	OCC for S210
Connector size	M23

### Mechanical data

Design acc. to Code I	IM B5 (IM V1, IM V3)
Vibration severity grade	Grade A
Shaft height	100
Flange size (AB)	192 mm
Centering ring (N)	180 mm
Hole circle (M)	215 mm
Screw-on hole (S)	14.0 mm
Overall length (LB)	198 mm
Diameter of shaft (D)	38 mm
Length of shaft (E)	80 mm
Length of flange diagonal (P)	244 mm
Shaft end	Fitted key
Color of the housing	Standard (Anthracite, similar to RAL 7016)

