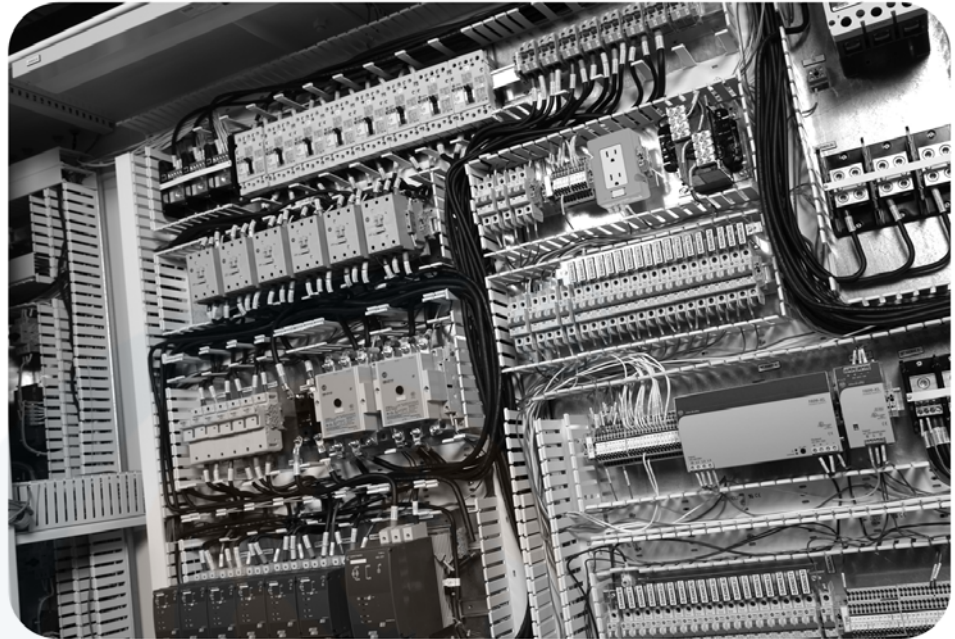


# ClearMark™ Printer



Catalog Numbers 1492-PRINT110, 1492-PRINT220

## User Manual



## Important User Information

In no event will Rockwell Automation, Inc. be responsible or liable for indirect or consequential damages resulting from the use or application of this equipment.

The examples and diagrams in this manual are included solely for illustrative purposes. Because of the many variables and requirements associated with any particular installation, Rockwell Automation, Inc. cannot assume responsibility or liability for actual use based on the examples and diagrams.

No patent liability is assumed by Rockwell Automation, Inc. with respect to use of information, circuits, equipment, or software described in this manual.

Reproduction of the contents of this manual, in whole or in part, without written permission of Rockwell Automation, Inc., is prohibited.

Throughout this manual, when necessary, we use notes to make you aware of safety considerations.



**ATTENTION:** Identifies information about practices or circumstances where there is a chance of person injury.

---

**ATTENTION:** Identifies information about practices or circumstances that can lead to property damage, or economic loss. Attentions help you identify a hazard, avoid a hazard, and recognize the consequence

---

**IMPORTANT** Identifies information that is critical for successful application and understanding of the product.

---



# Table of Contents

## Preface

### Chapter 1: Product Overview

Introduction .....	1-1
Description .....	1-1
Display Functions .....	1-5
Rotating the Operating and Control Panel (Display) .....	1-8

### Chapter 2: Initial Set Up

Unpacking and Inspecting .....	2-1
Set Up .....	2-2
Connecting the Power Cord .....	2-3

### Chapter 3: Installing the Printer Driver

Introduction .....	3-1
Windows XP/Windows 2000 .....	3-2
Network Connection .....	3-5
Windows Vista .....	3-11
Network Connection .....	3-15

### Chapter 4: ClearTools™ Software

Installing the ClearTools Software .....	4-1
Printer Driver Settings .....	4-2
Printer Setup .....	4-3
Adjusting the Marker Type .....	4-4

### Chapter 5: Calibration

General Calibration .....	5-1
Specific Card Calibration .....	5-5

### Chapter 6: First Time Use

Checklist .....	6-1
Heating Settings .....	6-3

### Chapter 7: Maintenance

General Maintenance .....	7-1
Cleaning the Print Heads .....	7-1
Replacing Ink Cartridges .....	7-4
Replacing the Ink Collector Unit .....	7-6
General Cleaning .....	7-8
Transport and Shipment .....	7-9

### Chapter 8: Trouble Shooting

LED Error Displays .....	8-1
General Trouble Shooting .....	8-2
Error Messages .....	8-4

## Appendix

Technical Data .....	Appendix-1
----------------------	------------